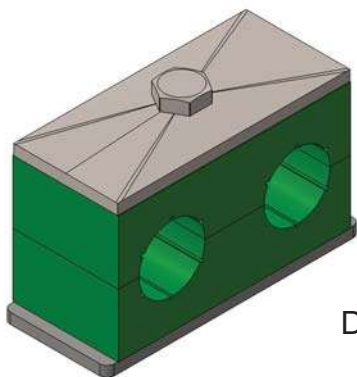
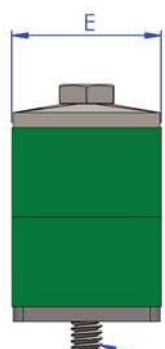


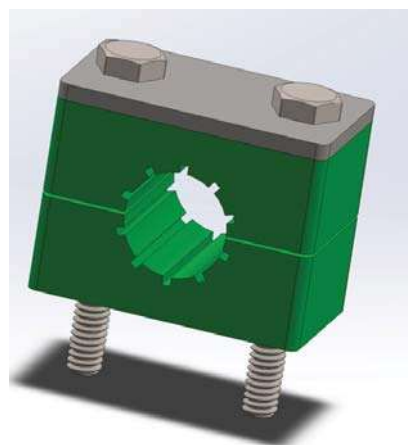
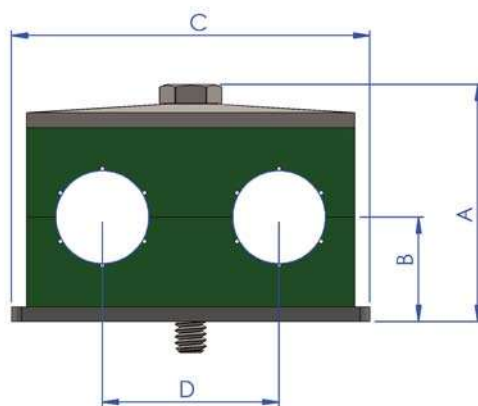
# TVI TUBING SUPPORT SYSTEM



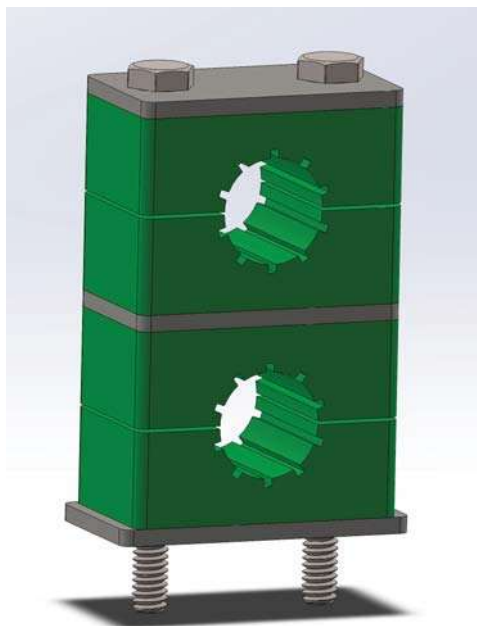
DUAL TUBE SUPPORTS



1/4-20 UNC



SINGLE TUBE SUPPORT



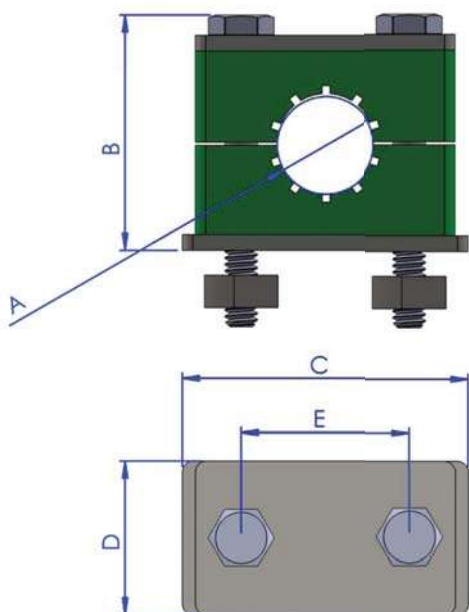
CAN BE STACKED (3) TALL



# TVI TUBING SUPPORT SYSTEM

**SINGLE TUBING SUPPORT CLAMP** (units: inches)

P/N	DIA-A	B	C	D	E
TSC-106346G-4	1/4"	1.42	1.89	1.18	1.02
TSC-106346G-6	3/8"	1.42	1.89	1.18	1.02
TSC-106346G-8	1/2"	1.42	1.89	1.18	1.02
TSC-106346G-12	3/4"	1.82	2.20	1.18	1.30
TSC-106346G-16	1.0"	1.82	2.20	1.18	1.30



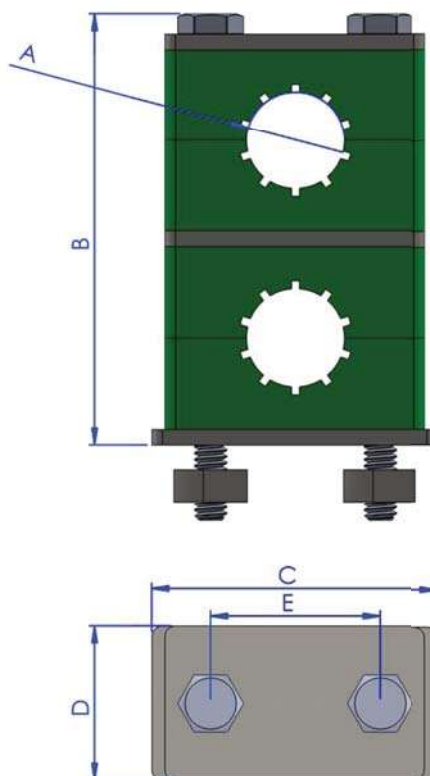
## Materials:

**Metal Components:** 316 SS

**Plastic Components:** Polypropylene

**2 STACK TUBING SUPPORT CLAMP** (units: inches)

P/N	DIA-A	B	C	D	E
TSC-106358G-4	1/4"	2.68	1.89	1.18	1.02
TSC-106358G-6	3/8"	2.68	1.89	1.18	1.02
TSC-106358G-8	1/2"	2.68	1.89	1.18	1.02
TSC-106358G-12	3/4"	3.30	2.20	1.18	1.30
TSC-106358G-16	1.0"	3.30	2.20	1.18	1.30



## Tube Support Systems

### Bolted Plastic Clamp Supports

**TVI** bolted plastic clamp supports offer versatility for mounting tubing and pipe. Three support kit configurations—single, twin, and single stacking—are available. See page 6.

Three mounting configurations—weld plate, mounting rail and rail nuts, and strut nuts—are available. See page 7.

### Features

- Absorb shock and vibration
- Resist many chemicals and corrosives
- Reduce stress on system components
- Enhance system reliability
- Resist ultraviolet light
- Make system easily accessible for installation and maintenance.

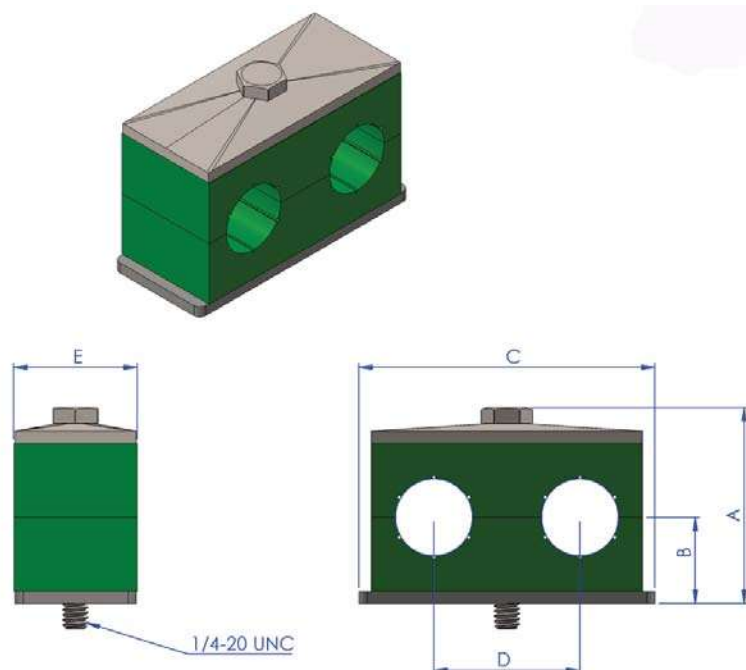
### Temperature Rating

–22 to 194°F (–30 to 90°C)

Texas Valve & Instruments, LLC  
8221 Lockheed Ave  
Houston, Tx 77061

T: 713.645.2100  
E: sales@tvi-i.com  
Web: tvi-i.com

# TVI TUBING SUPPORT SYSTEM



**SINGLE TUBING SUPPORT CLAMP** (units: inches)

P/N	A	B	C	D	E
TSC-106369G-4	1.50	.53	1.42	1.18	1.02
TSC-106369G-6	3/8"	.53	1.42	1.18	1.02
TSC-106369G-8	1/2"	.73	2.64	1.18	1.02
TSC-106369G-12	1.93	.73	2.64	1.18	1.30
TSC-106369G-16	1.0"	.73	2.64	1.18	1.30

## Materials:

**Metal Components: 316 SS**

**Plastic Components: Polypropylene**

## Tube Support Systems

### Bolted Plastic Clamp Supports

**TVI** bolted plastic clamp supports offer versatility for mounting tubing and pipe. Three support kit configurations—single, twin, and single stacking—are available. See page 6.

Three mounting configurations—weld plate, mounting rail and rail nuts, and strut nuts—are available. See page 7.

### Features

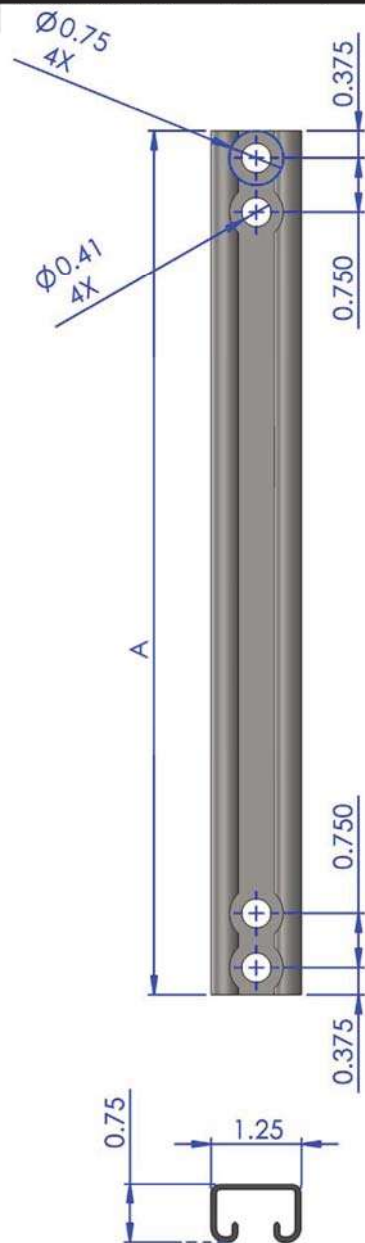
- Absorb shock and vibration
- Resist many chemicals and corrosives
- Reduce stress on system components
- Enhance system reliability
- Resist ultraviolet light
- Make system easily accessible for installation and maintenance.

### Temperature Rating

–22 to 194°F (–30 to 90°C)

# TVI TUBING SUPPORT SYSTEM

TUBING STRUT	
P/N	LENGTH -A
TSC-106355G-4	4.0"
TSC-106355G-8	8.0"
TSC-106355G-12	12"



STANDARD MATERIAL: 316SS

RAIL NUTS	
P/N	THREAD
TSC-106356G-4	1/4"-20 UNC
TSC-106356G-6	3/8-18 UNC

